

BOSSWOOD FLOOR INSTALLATION GUIDE

**IMPORTANT: BEGIN INSTALLATION AT THE TOP RIGHT HAND CORNER OF THE ROOM.
PLANKS ARE INSTALLED FROM THE RIGHT TO THE LEFT-HAND SIDE OF THE ROOM.**

NOTE: It is important to read the instructions before installation. It is the Owner/Installer responsibility to make sure the below conditions are met prior to installation. Update – All installs now require a moisture barrier of 6mil plastic film under this flooring. Further precautions may be needed on concrete subfloors.

SUBFLOOR

Recommended conditions are 40%-60% relative humidity & HVAC operating 60°F - 85°F.

Concrete Floors

- Tesoro™ BossWood may be installed over on grade, above grade, or below grade concrete subfloors. Concrete floors shall be constructed in accordance with the American Concrete Institute (ACI) 302.1 Guide for Concrete Floor and Slab Construction. Concrete shall be finished and cured according to ACI and have a minimum compressive strength of 3500 psi. Installation of moisture vapor barrier is recommended prior to pouring of on or below grade slabs. The concrete subfloor must be prepped according to ASTM F710 standards, so it is clean, dry, smooth, and flat. The surface must be dry, clean, smooth and level. SubFloor flatness must be within 1/8" in every 6 ft radius or within 3/16" in every 10ft radius. Then a moisture test throughout the jobsite must be conducted & recorded according to ASTM F2659 prior to installation. Refer to Tramex Quick Check video as an example <https://www.youtube.com/watch?v=2eTgxb6Bloo> . **Before any floating floor installation, a 6 mil polyurethane vapor barrier is recommended on top of the concrete subfloor, to mitigate against any possible future, natural or unnatural, moisture issues.** Tesoro™ LEP may be installed over gypsum based underlayments. If moisture readings from concrete exceeds 4% with Tramex Concrete Moisture Encounter, additional moisture mitigation must be done. A 6 mil plastic vapor barrier MUST be installed under any floating floor installation . If moisture exceeds 8 pounds using a Calcium Chloride test, then use additional moisture prevention before installation.
- Pad attached flooring does not count as a moisture barrier by itself.

Tile, Stone & Plywood (DO NOT install over existing finished hardwood or laminate)

- The surface must be dry, clean, smooth and level. Floor flatness must be within 1/8" in every 6" radius or within 3/16" in every 10ft radius.
- Fix any squeaks, remove any staples, loose boards, etc. prior to installing flooring.
- There must be no movement or deflection in the subfloor

Carpet and underpadding

- Remove both before laying down the floor, and proceed as outlined in A or B.

Vinyl or VCT floor surfaces

Vinyl must be glued down and secured. Do not install on over floating LVP floors.

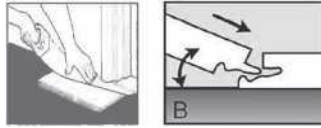
(If existing vinyl or VCT floor is on top of concrete, a 6 mil moisture barrier must be placed on top before installing the floor).

Radiant heat floors

- Follow the installation instructions provided by the radiant heat manufacturer.
- New concrete subfloors must be cured with no heat transfer for 60 days.
- The radiant heating must be operational for two weeks prior to installing the laminate flooring, and the temperature must be maintained between 65-72°F.
- Keep the temperature below 80°F at all times.
- Slight gaps may occur between laminate planks installed over radiant heating and will not be covered by the warranty.

PREPARATION

- 1) Leave closed packages in a horizontal position in the room for 48 hours prior to installing. Subfloor needs to be prepared (as above).
- 2) There must be at least 1/2" between the surface of the floor and the bottom of electrical baseboard heater to allow heat to circulate.
- 3) Verify door and frame clearances and make required adjustments before laying floor. Cut the door molding with a saw to allow planks to slide underneath. (See figure A.)
- 4) Carefully remove existing baseboards. When putting baseboards back, make sure they do not pin the floor, leave 1/16" gap under base moldings so floor can expand and contract.
- 5) Decide in which direction the planks should be laid. As a rule, the floor planks should be laid perpendicular to the wall that has a window in it. To make the room appear larger, it may be preferable to lay down the floor planks parallel to the longest wall.
- 6) Before installing, check planks for defects such as chips and color or sheen differences under good light conditions. Check that the channel is clean and free of debris. Damaged planks must be replaced before laying down the floor.
- 7) **A minimum expansion area of 3/8" is required around the perimeter of the room, as well as against any fixed object including: door thresholds, fireplace mantle, kitchen cabinets, against all laminate moldings, etc. Leave 1/16" gap under all base & quarter round moldings to allow for the floor to move freely. Do not use caulk adhesive, which can grab the floor and prevent it from moving freely.**



NOTE: Safety glasses and gloves should be worn at all times.

INSTALLATION

THIS PRODUCT IS PRIMARILY MADE OF IMPREGNATED WOOD MATERIAL AND NEEDS ROOM TO EXPAND AND CONTRACT. DO NOT ATTACH THE FLOOR TO ANY SURFACE. ALWAYS ALLOW AN EXPANSION GAP AT THE PERIMETER AND AROUND ALL VERTICAL OBSTACLES.

1) Installation method: the planks click together at a 45° angle on the length side (see figure B). Note that a tapping block and mallet may be used for a tighter fit along the lengths of planks. Do not use excessive force, as this may damage the tongue and /or groove.

Connecting the short ends together must be done using a tapping block and hammer, tapping the tongue into the groove (see figure C). When installing the last plank in a row, it may be necessary to use a pull bar. Place the pull bar between the wall and the laminate and gently tap on the lip on top (see figure D).

2) Measure the room to establish its squareness and the width of the last row. If the width of the last row is less than 2 inches, not including the bottom lip of the groove, the first row will have to be cut accordingly. The tongue on the first row of planks and the bottom lip of the groove side on the last row of the planks should also be removed (see figure E). Use T-moldings if the floor is wider or longer than 50 ft.

3) Irregular wall along the first row of planks - scribe the planks to fit the wall and cut.

4) When cutting a plank, if using a portable electric saw (jigsaw), the decorative surface must face up. If using a circular table saw, the decorative surface must face down.

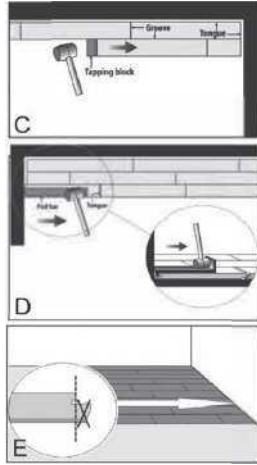
5) **Begin installation on the top right hand corner of the room**, with the tongue side against the starting wall. Always place a 3/8" spacer between the wall or any fixed object (door thresholds, kitchen/bath cabinets, fireplace mantles, etc.) and the plank on either side of each joint and at the far ends of each plank.

6) The first and last plank in a row must be at least 12" long. Measure the first row before installing. To avoid ending the row with a plank of less than 12" in length, it may be necessary to cut the first plank. Always remove the groove on the last plank. For the first plank of the second row, use the cut plank left over from the first row provided it is more than 12" long. If it is less than 12" long, use a new plank, cutting it so it is at least 12" away from the joint of the first plank on the first row. Always remove the bottom lip of the groove and the tongue from the ends of the planks against the walls (see figure E).

7) Continue laying down the floor from right to left. For a stronger and more natural looking floor, make sure to stagger the joints in each row by at least 8". Remove the spacers and install moldings and trims. Never nail the moldings to the laminate floor.

8) Transition moldings must be added between doorways less than 32" wide to allow for the natural expansion and contraction of the floor.

9) When installing laminate in the kitchen or other areas, do not install cabinets, islands or other items onto the floating flooring. Tesoro™ LEP, when installed as a floating floor cannot be pinned down by base moldings. 1/16" gap must be used under all baseboards & quarter round moldings on top of the floor. Failure to do so will void any warranty.



IMPORTANT – Before starting – remove planks from 3 different boxes and find a good mixture that gives the best natural look. Inspect ALL planks before installation for defects or damage. **INSTALLATION CONSTITUTES ACCEPTANCE.** This document was updated 3/15/23.