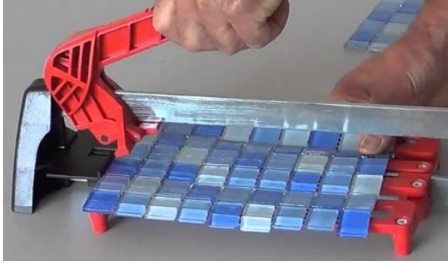


## How-to Cut-Glass Mosaic Tile

These instructions are meant to be a general guide to several options, there are several issues which require close attention. Proper planning for the glass tile project should always include determining where the cuts will happen, adjustment should always be made to minimize the number of cuts as well as maximize the size of the cut piece, sliver cuts are problematic. Choose a method based on also minimizing the edge chipping that can occur while cutting glass.

### Hand Tile Cutter with Carbide Blade

When planning allows for adequate size cuts, the classic manual tile bar cutter can be adequate using a score and snap technique. Take the marked (washable ink or pencil) sheet to be cut on the table lining up the line with the cutting wheel. Score the face of the tiles on the sheet with the carbide wheel, then using the breaker bar of the handle and snap the glass tile individually. ***Very small cuts cannot be accomplished with this method.***



Hand Cutter / Tile Nippers



### Tile Nippers

Carbide tipped tile nippers work well with small cuts on smaller size tiles. It can be simply like biting the edge of the glass tile off with the tips. Prescoring the cuts with a hand tile cutter can help in getting the break to follow the proper line.

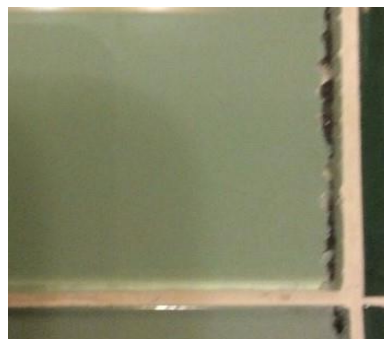
### Wet Saw / Diamond Blade

- **Diamond Glass Blade** – Do not use a regular tile diamond blade, Glass Tile Blades have finer & softer diamonds that create a smoother cut. Important to push the glass through the blade slowly, glass is much different from ceramic tiles.

***Most complaints about glass tile cutting are regarding the popular Crystal Glass Mosaics where the color decoration is on the backside of the tiles. Wet saw blades tend to exit the bottom of the cut with small chips coming off including the decoration. This can usually be seen as an installation flaw when the final product is inspected.*** See below:



Wet Saw cutting full depth through face



Jagged cut seen from face

- **Cut upside down** - The rationale for cutting glass tiles upside down is that the glass tile blade will cut the coating smoothly entering through the back side. The front side of the glass that is cut back side first will have a slightly rougher edge, which can be sanded / filed down, so that it's smoother.

***Recommendation: Double Cut Method (below):***

- **Double Cut Method** – This is a meticulous method but provides the least chipping and the smoothest edges when cutting Crystal Glass with the decoration on the back side.

Using Painters tape, wrap your glass tile to be cut front and back.  
Mark both sides with the cut line with an appropriate marker.



**Front /Face side taped with cut line marked**



**Back side taped with cut line marked**

Set the Wet Saw blade such that it will cut halfway through the thickness of the glass tile.  
Cut through backside of the glass first, at half thickness depth.



**First - Backside cut ½ depth**



**Second – Frontside cut other ½ depth**

Turn over and cut through the front / face side the other half of the thickness.

**NOTE** - Don't drag the rolling saw cart back through the glass tile after cutting.

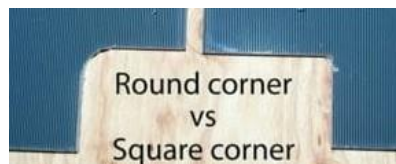


- **Cutting Holes** – Use a Diamond Tipped Hole Saw Blade, while running water on the surface. **NOTE** - *for best results: use the double cut methodology.*

### Other Issues

- **Issue - Cutting through the tile only to have it break at the end?**

- **Solution** - cut partially through both ends before the middle.



- **Issue – Corners cut in glass tile cracking?**

- **Solution** - Round your notches

It's almost inevitable that you'll have some sort of notch cut to make.  
The problem is that a notch, or L-cut inside corner is highly likely to crack,  
Rounding the inside of the notch lowers the chances of it cracking.

**Avoid these types of cuts if possible.**